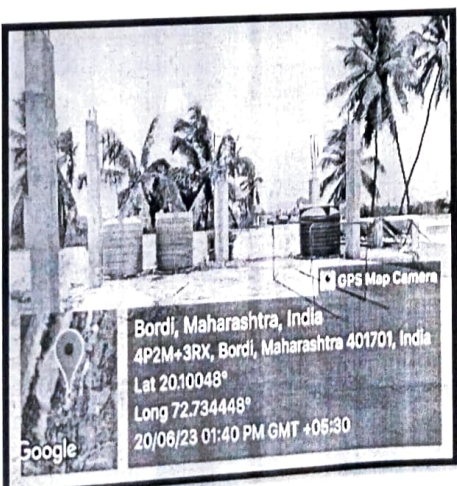
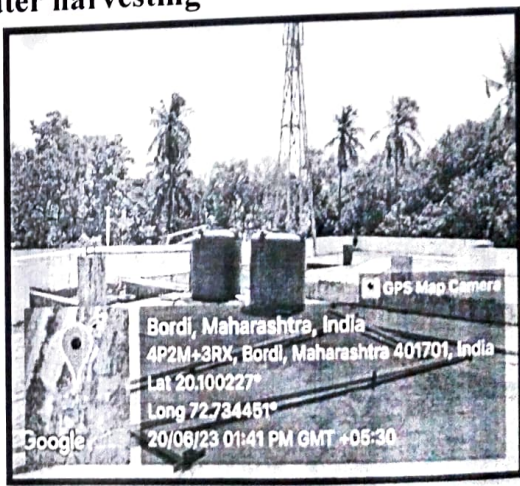
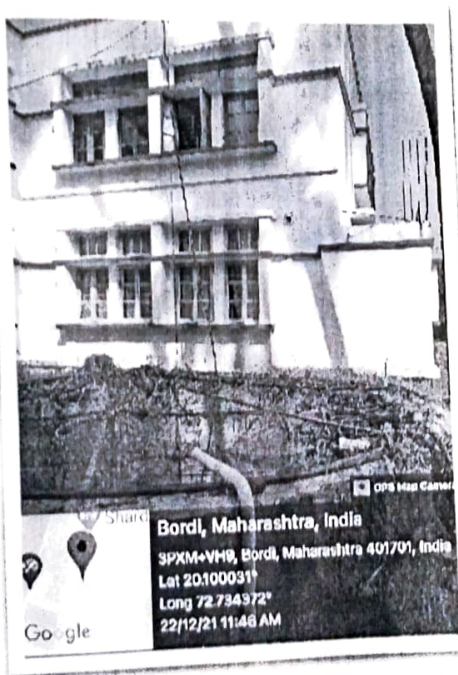


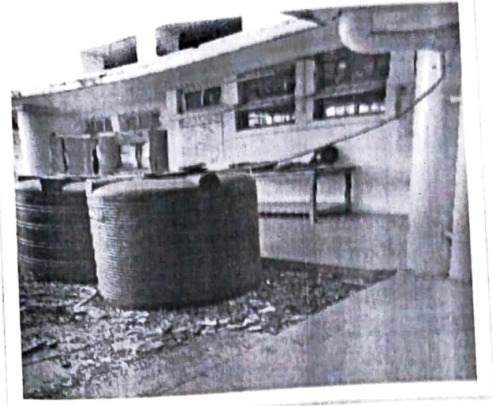
7.1.4	<i>Water conservation facilities available in the Institution:</i>	Weightage 4
Q _n M	<p>1. Rain water harvesting ✓</p> <p>2. Bore well /Open well recharge ✓</p> <p>3. Construction of tanks and bunds</p> <p>4. Waste water recycling</p> <p>5. Maintenance of water bodies and distribution system in the campus ✓</p> <p>Options:</p> <p>A. Any 4 or all of the above</p> <p>B. Any 3 of the above</p> <p>C. Any 2 of the above</p> <p>D. Any 1 of the above</p> <p>E. None of the above</p> <p>Upload :</p> <ul style="list-style-type: none"> • Geo tagged photographs / videos of the facilities • Any other relevant information <p>Action Plans:</p> <p style="text-align: center;">Rain water harvesting</p> <div style="display: flex; justify-content: space-around;">   </div>	



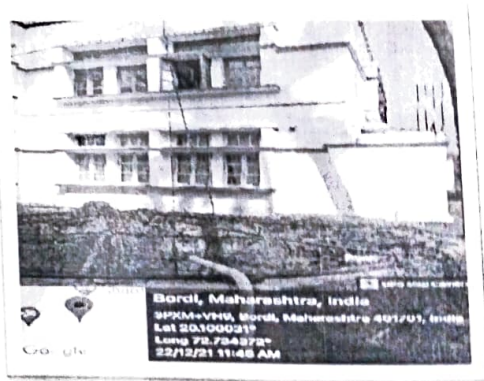
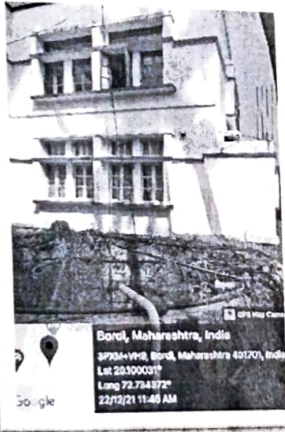

I/C PRINCIPAL
 Gokhale Education Society's
 N. B. Mehra Science College
 Bordi, Dahanu, Palghar
 Pin - 401 701



[Signature]
 I/G PRINCIPAL
 Gokhale Education Society's
 N. B. Mehta Science College
 Bordi, Dahanu, Palghar
 Pin - 401 701



Water conservation facilities



(Signature)
 I/C PRINCIPAL
 Gokhale Education Society's
 N. B. Mehta Science College
 Bordi, Dahanu, Palghar
 Pin - 401 701