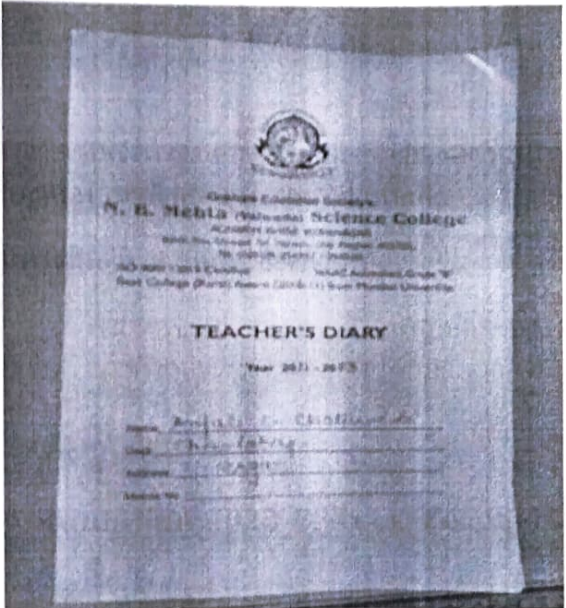
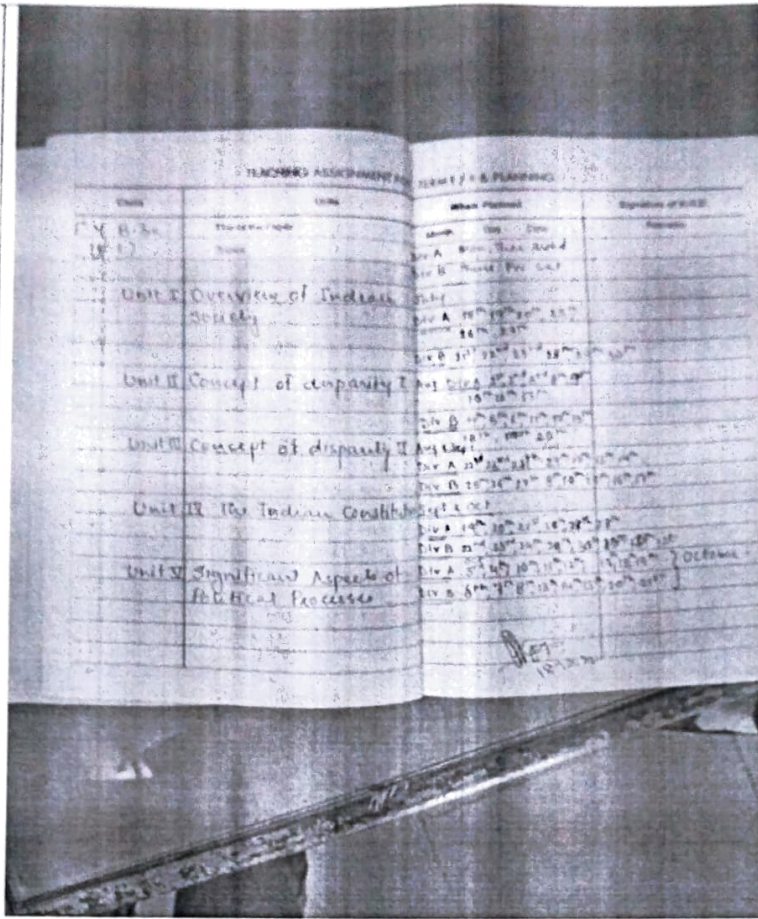


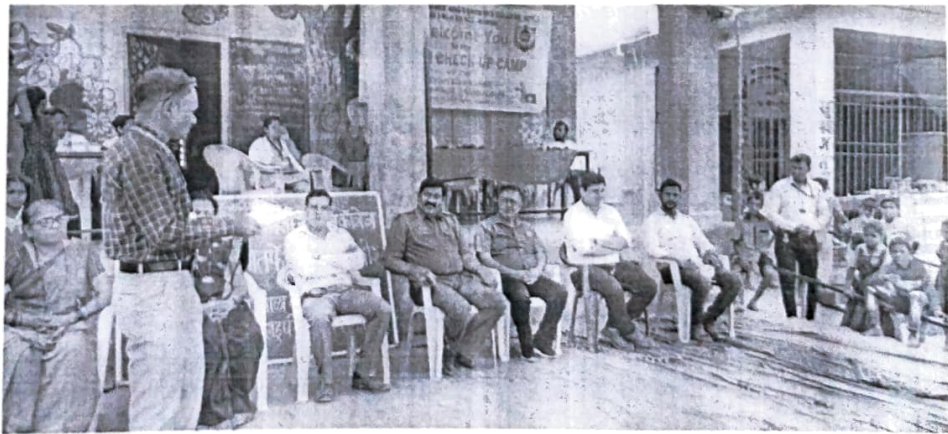
Metric No.	Key Indicator - 7.2 Best Practices (Weightage - 30)
7.2.1 Q ₁ M	<p>Describe two best practices successfully implemented by the Institution as per NAAC format provided in the Manual.</p> <p>Provide web link to:</p> <ul style="list-style-type: none"> • Best practices in the Institutional web site • Any other relevant information
<p><u>Action Plan 2022-23-</u> (1) Teachers' Diary</p> 	



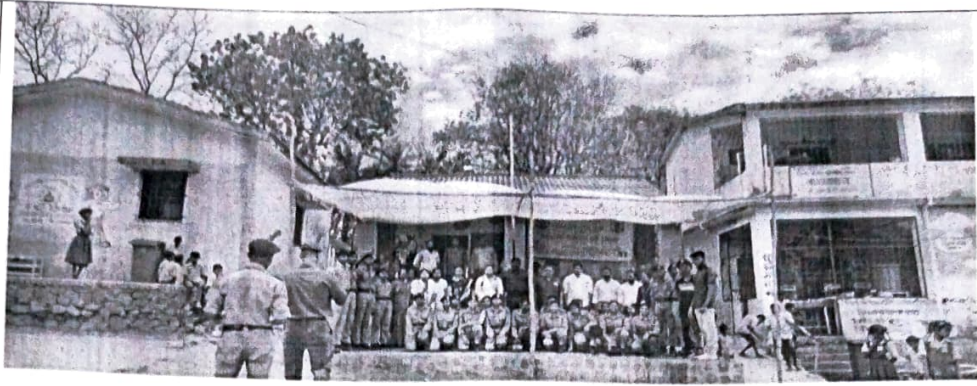

PRINCIPAL
 Gokhale Education Society's
 N. B. Mehta Science College
 Bordi, Dahanu, Palghar
 Pin - 401 701



(2) Medical Camp at Khorepada



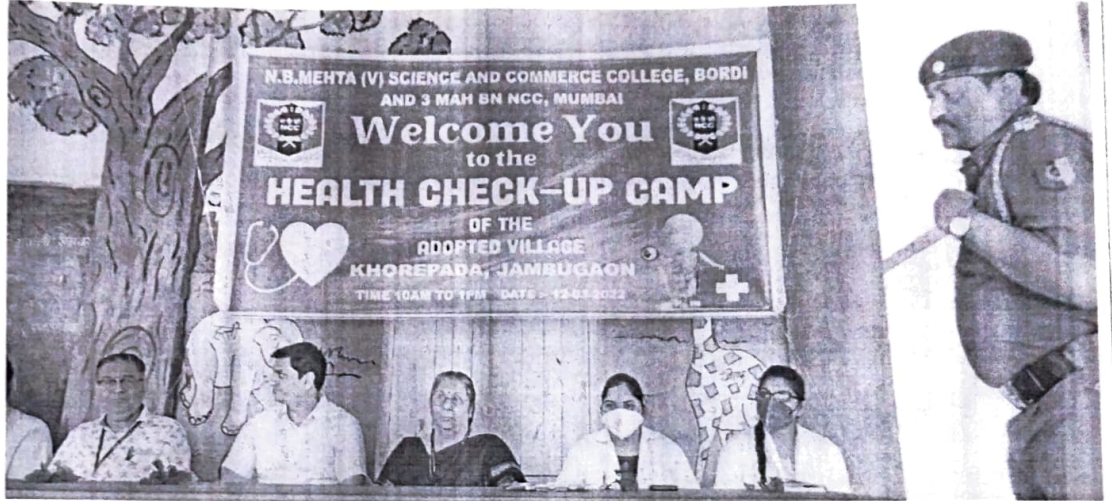

 I/C PRINCIPAL
 Gokhale Education Society's
 N. B. Mehta Science College
 Bordi, Dahoru, Palghar
 Pin - 401 701



Health Checkup Camp at Khorepada




I/C PRINCIPAL
Gokhale Education Society's
N. B. Mehta Science College
Bordi, Dahanu, Palghar
Pin - 401 701



[Signature]
I/C PRINCIPAL
Gokhale Education Society's
N. B. Mehta Science College
Bordi, Dahanu, Palghar
Pin - 401 701