

Criterion 7 – Institutional Values and Best Practices

Key Indicator - 7.1 Institutional Values and Social Responsibilities

Sl. No.	Code No.	Gender Equity	
7.1.1		<p>Measures initiated by the Institution for the promotion of gender equity during the year.</p> <p>QIM Provide Web link to:</p> <ul style="list-style-type: none"> • Annual gender sensitization action plan • Specific facilities provided for women in terms of: <ol style="list-style-type: none"> a. Safety and security b. Counseling c. Common Rooms <p>➤ Gender equity means fairness, righteousness in distribution of benefits and responsibilities equally in both the genders. We at NBM conduct regular gender equity promotion programs to provide equal opportunities to our students.</p> <p>➤ The gender equity promotion is through curricular and co-curricular activities. In curricular activities students are made aware about the gender equity through lectures in subject like Foundation where topics like Women's rights, Human rights, Child rights and Gender justice are taught. In co-curricular activities girls and boys together participate in NCC and NSS and become aware about their responsibilities and duties.</p> <p>➤ We have enrolment of nearly 68% women students and 70% women staff who are provided safe, secure and friendly working atmosphere at NBM irrespective of gender, caste, color, language, religion, social origin, property or any other status.</p> <p>➤ We provide strict implementation of Anti-Ragging and Anti-harassment Campus.</p> <p>➤ Surveillance network with 24x7 monitoring with CCTV cameras for safety and security of girls.</p> <p>➤ Common Rooms: Common rooms are allocated for staff and girls, which also facilitate reading and discussions.</p> <p>➤ Principal Sir delivered a lecture on the beginning of academic year</p> <p>➤ Various activities are organized towards gender sensitization. As a part of gender equality, a guest lecture was organized for girls on women empowerment on 8th March 2023. Smt. Madhumitha IFS, Deputy Forest Officer, Dahanu was invited as guest speaker. All college girls participated in the event and got benefitted.</p> <p style="text-align: center;">Supportive Documents: Attendance of students Pictures of Action plan</p>	
Sr. No.	Planned on	Program to be conducted	No. of Participants
1	06/03/2023	Women Day Celebration on 08 th March 2023	150



I/C PRINCIPAL
 Gokhale Education Society's
 N. B. Mehta Science College
 Bordi, Dahanu, Palghar
 Pin - 401 701

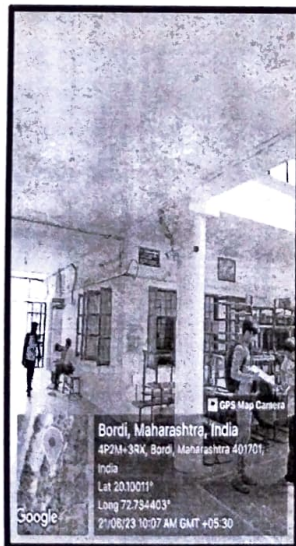
• Women's Day Celebration on 08th March 2023



I/C PRINCIPAL
 Gokhale Education Society's
 N. B. Mehta Science College
 Bordi, Dahanu, Palghar
 Pin - 401 701



- Camera Surveillance 24x7



(Signature)
I/C PRINCIPAL
 Gokhale Education Society's
 N. B. Mehta Science College
 Bordi, Dahanu, Palghar
 Pin - 401 701

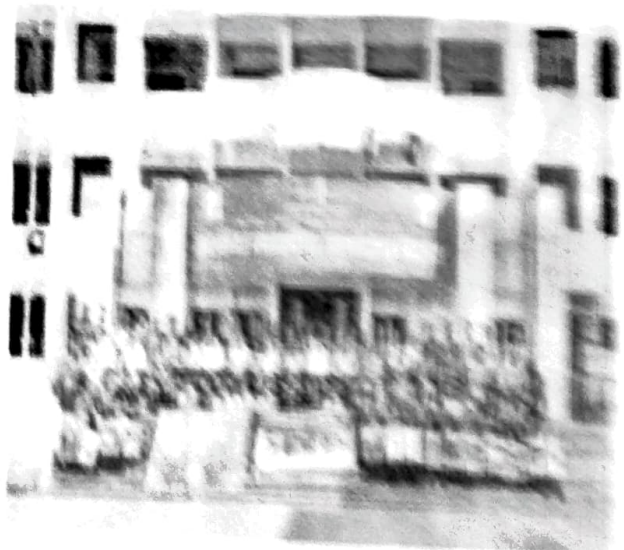


Common room for girl student

Anti-harassment and Anti Ragging



NSS camp where Gender Equality is promoted



Handwritten signature and text: N. A. WADIA SCIENCE COLLEGE, BARDI, DISTRICT DAPHAR...

7.1.2 Environmental Consciousness and Sustainability

7.1.2 The Institution has facilities for alternate sources of energy and energy conservation measures

1. Solar energy
2. Biogas plant
3. Wheeling to the Grid
4. Sensor-based energy conservation
5. Use of LED bulbs/ power efficient equipment

Options:

- A. 4 or All of the above
- B. Any 3 of the above
- C. Any 2 of the above
- D. Any 1 of the above
- E. None of the above

- In order to develop awareness regarding energy conservation by saving energy, **boards** reminding everyone of energy saving are displayed on the campus at various points where most of the students have footfall.
- Instead of using heating mantle, Department of Chemistry has started using **Solar Distillation Plant** from the academic year 2017-18. This gives 2.5L of conductivity water per day thereby reducing the power requirement. Heating mantle of 2000W if used continuously for 8 hours gives 7L to 8L of conductivity water. Consequently 1 L of conductivity water - requires 2 units of current. Department of Chemistry requires 200L of conductivity water per year. 200 L of conductivity water require 400 units of (energy) electricity. With the help of solar Distillation Plant, we are able to save 400 units of electricity.
- In an effort to initiate Green Energy Drive, we have installed **solar panels** to run computers of various departments like Microbiology, Biotechnology, Botany, Zoology and Physics from 2019-20.
- The daily power requirements for computers and printers for various departments are met with the help of two solar panel with capacity of 2 x 335W they are mounted on the terrace of the college building.
- **Solar Charge Controller (20A)** is used to control switching between solar and mains power accordingly. And the other four solar panels with capacity 4 x 335W are made available for college office, Principal office and Internet service room. With the help of these, 4 desktop computers, 2 laser printers, 6 fans and 8 LED bulbs and Principal's office PCs functions smoothly.


- Solar Charge Controller (60A) is used to control switching between solar and mains power accordingly.
- Every classroom is provided with **LED** bulbs connection and LED tube lights in laboratories. We have in all 150 tube-lights and 50 CFL/LED bulbs



I/C PRINCIPAL
Gokhale Education Society
B. Mehta Science College
Bordi, Daharu, Palghar
Pin - 401 701

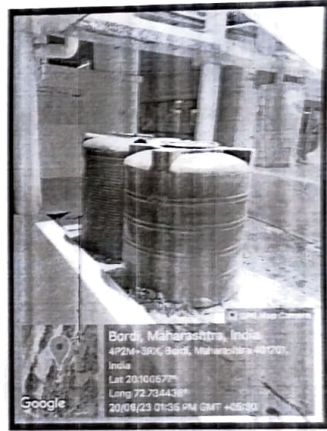
- The **suction pump**, in the Chemistry laboratory has been established in April 2018. It is ecofriendly as instead of oil we are using water. As water is recycled so **wastage of water is avoided**. In the oil pump there were chances of oil spill as well as filtrate getting contaminated with oil. In this suction pump these problems are avoided. The suction pump is economic as we do not need to change oil as it works on water. It is easy to operate and has zero maintenance cost. Before these 3 separate suction pumps were used in 3 different labs.
- But now with a single suction pump 3 vents are provided in each lab, so as to make the filtration process easy and fast. The 3-pump used previously were of 0.5HP each so total 1.5HP was used. Now this single pump is of 1HP so consumption of power is reduced by 0.5HP. Hence, we can say that it has 3-fold suction capacity over oil suction pump.
- We have **manually operated ice crusher in chemistry lab** as into save the electricity.
- **Supportive Photographs:**




I/C PRINCIPAL
Gokhale Education Society's
N. B. Mehta Science College
Bordi, Dahanu, Palghar
Pin - 401 701

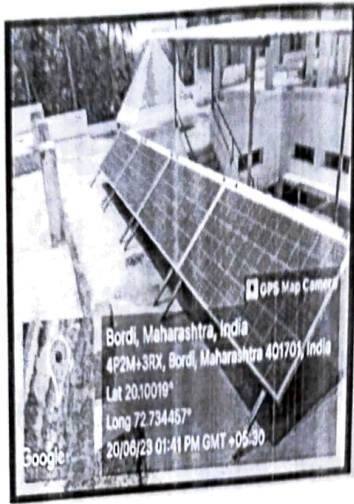
7.1.2 The Institution has facilities for alternate sources of energy and energy conservation measures

Use of Solar Energy and Water Conservation



I/C PRINCIPAL
Gokhale Education Society's
N. B. Mehta Science College
Bordi, Dahanu, Palghar
Pin - 401701

Pin - 401701



Manually operated ice crusher

Batteries



[Signature]
 I/O PRINCIPAL
 Gokhale Education Society's
 N. B. Mehta Science College
 Bardi, Dahanu, Palghar
 Pin - 401 701